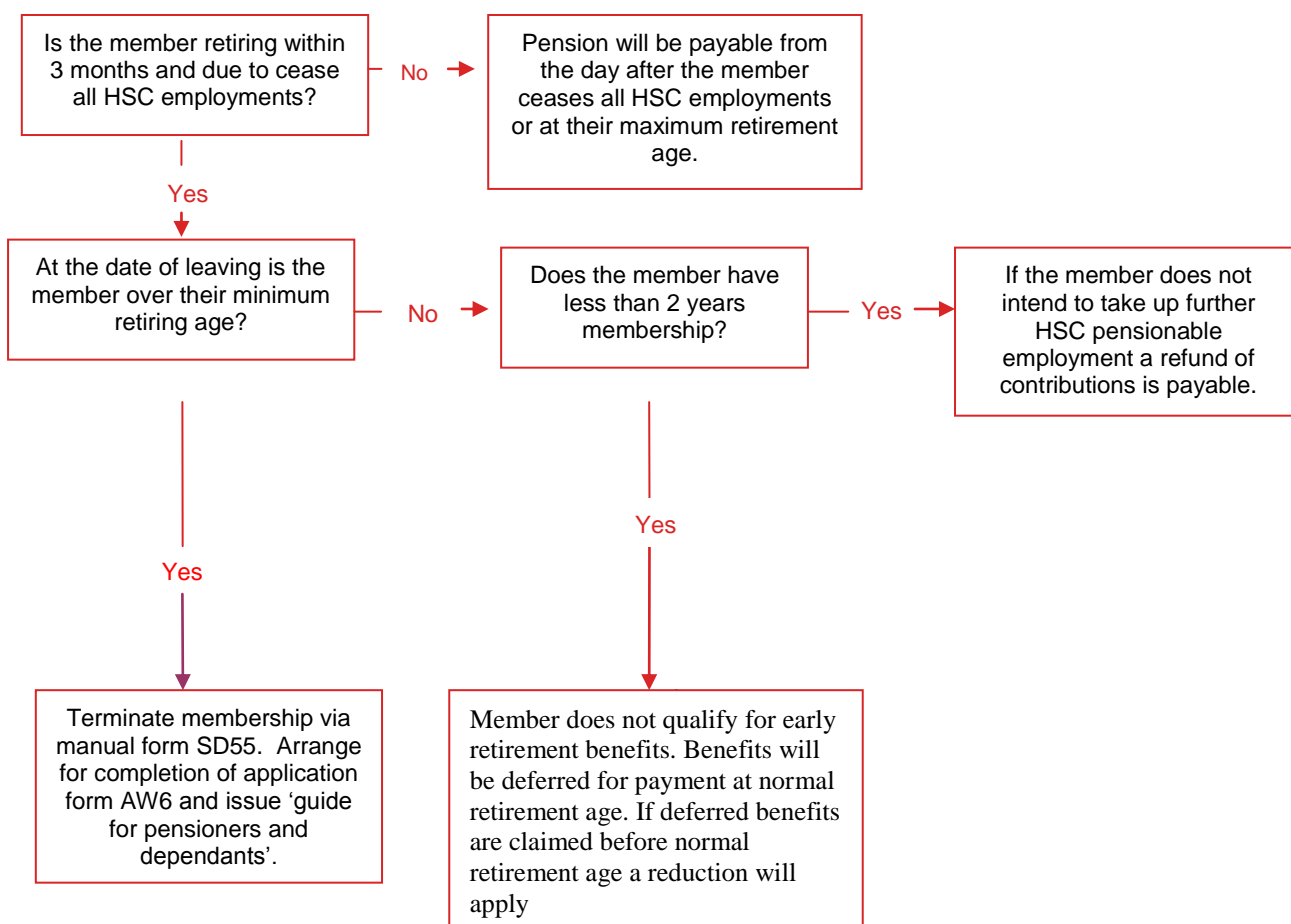


HSC Pension Scheme Voluntary Early Retirement - Reduced Decision Tree

Changes to the HSC Pension Scheme effective from 1 April 2008 mean that there are 2 sections to the HSC Pension Scheme. Please establish the member's scheme section and minimum retirement age before continuing. See flowchart 'Which scheme?'



Important: Please note that in the unlikely event that the members pension is less than the guaranteed minimum pension, the member will not be able to take voluntary early retirement.

Employer Decision Tree: Reduced VER

