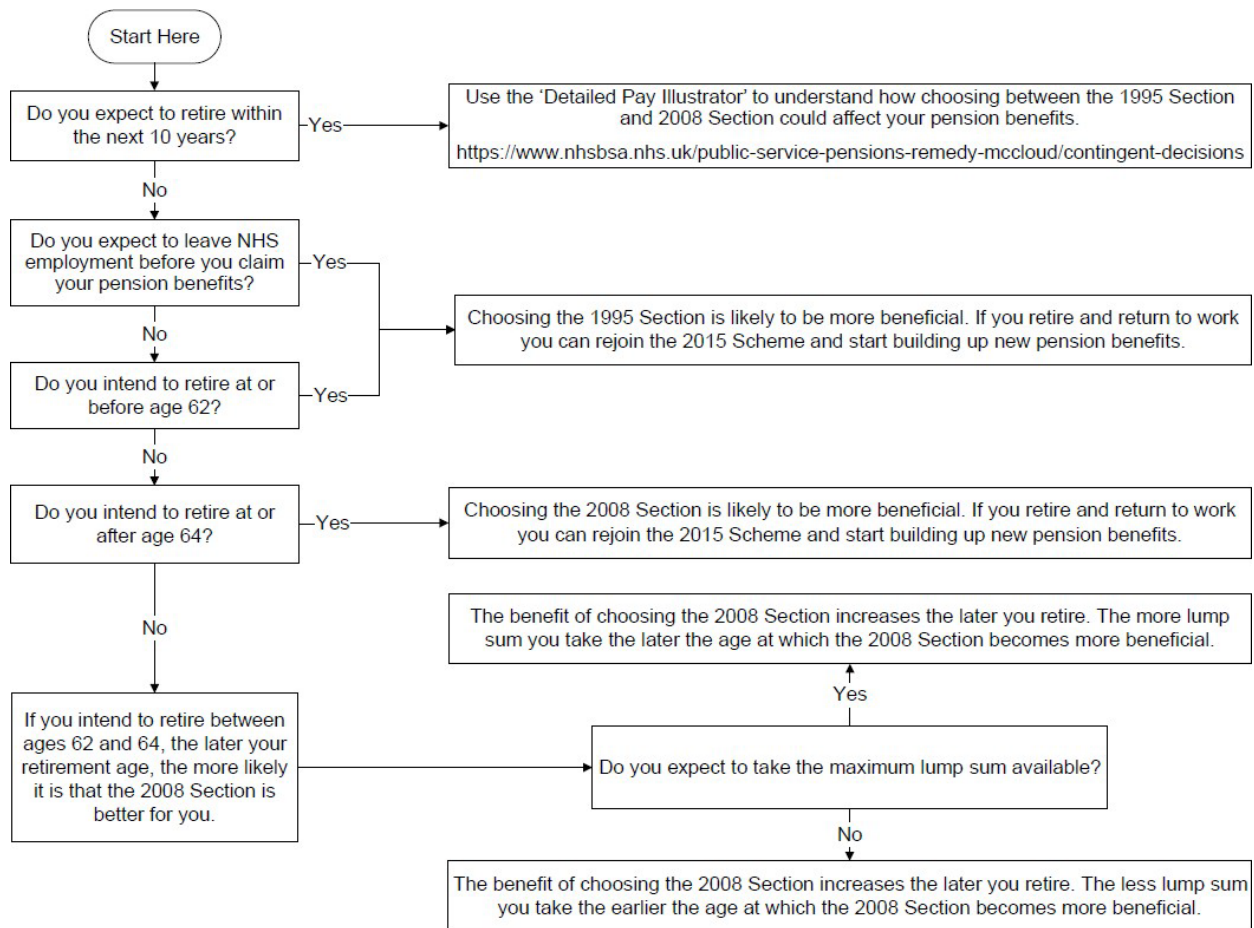




# MEMBER'S DECISION TREE

## REVISITING YOUR CHOICE 2 DECISION

If you've recently received a letter asking you to choose between the 1995 Section or the 2008 Section for your pension benefits up to 31 March 2022, this decision tree can help you to understand which option is best for you.



Please see more information on our website: <https://hscpensions.hscni.net>